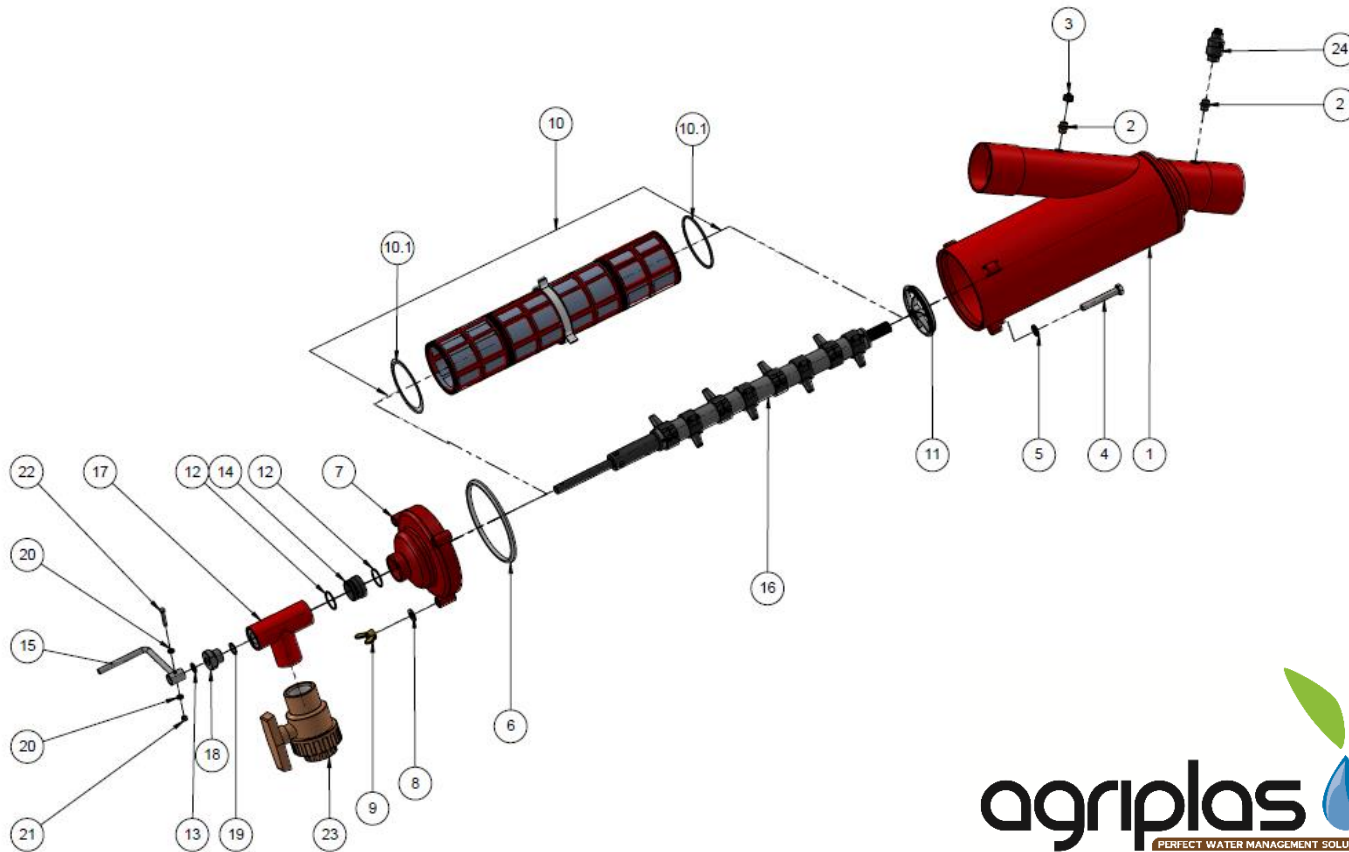


3" Scanaway Filter IN/LINE BSPT PKPK3002



| ITEM NO. | CAT. NO. | DESCRIPTION | QTY. | MATERIAL |
|----------|---------------|---|------|-------------|
| 1 | 710105-000115 | Metal House Filter 3"BSPT PKPK 3002 | 1 | ST 37-2 |
| 2 | 710103-000591 | Pressure Check Point Connector 1/4"X1/4" | 2 | Brass |
| 3 | 700190-001305 | Pressure Check Point Plastic W/O Nipple | 1 | Various |
| 4 | 760101-000322 | Hex Bolt Partial Thread M12X80 Z.PLT C/ST | 3 | Zinc Plated |
| 5 | 710101-000632 | Hold Plastic Washer | 3 | PP |
| 6 | 770104-000083 | Servic Port Lid Seal AM-12 (SAF-4500) | 1 | NBR |
| 7 | 710105-000057 | Lid 2"-4" (DOM)Shape Seal Poly PKPK-3002 | 1 | ST.37-2 |
| 8 | 760103-000077 | Flat Washer M12 DIN125 Zinc Plated C/ST | 3 | Zinc Plated |
| 9 | 760102-000113 | Wing Nut M12 Brass B18.17 | 3 | Brass |
| 10 | 700101-000449 | Wevewire S/S T316 930SQ.CM Screen 130MIC FOR 3" Metal | 1 | Various |
| 11 | 710101-000656 | Centering Ring For Suction Scanner | 1 | Delrin |
| 12 | 770102-000092 | O-Ring Seal P2-125 Scanner Bearing NBR'S" | 2 | NBR |
| 13 | 770102-000083 | O-Ring Seal p2-114 NBR's" | 1 | NBR |
| 14 | 710103-000717 | Sealing Insert for suction scanner 2"-4" | 1 | Delrin |
| 15 | 710102-000057 | Operating Handle (2"-4") | 1 | S/ST 316L |
| 16 | 710103-000722 | Suction Scanner 2"-4"L | 1 | Various |
| 17 | 710102-000086 | Tee 1.5" BSPT Red | 1 | ST 37-2 |
| 18 | 710103-000703 | Bearing Nut B/A, S/A Shaft | 1 | PVC |
| 19 | 770102-000085 | O-Ring Seal P2-116 NBR | 1 | NBR |
| 20 | 760103-000094 | Flat Washer M6 DIN125 S/ST316 | 2 | S/ST 316 |
| 21 | 760102-000085 | Hex Nut M6 DIN934 | 1 | S/ST 316 |
| 22 | 760101-000447 | Hex Bolt Full Thread M6x35 DIN933 S/St 304 | 1 | S/ST 304 |
| 23 | 730104-000253 | Ball Valve 1 1/2",PVC,Threaded | 1 | PVC |
| 24 | 700190-001245 | Clogging Indicator Assembly 1/4"BSP | 1 | Various |
| 10.1 | 770102-000130 | O-Ring 2-242 70Shore | 2 | NBR |