

INSTRUCTIONS

INTRODUCTION

The PUMP CONTROL UNIT or PCU is a wireless receiver capable of switching a high current output, typically used to activate a contact breaker circuit to start or stop a pump. It is used with any Agriplas transmitter to provide remote control operation of a pump.

It can also be used with up to 5 Agriplas Tank Level Controllers (TLC) to allow remote automatic level control for water tanks or dams.

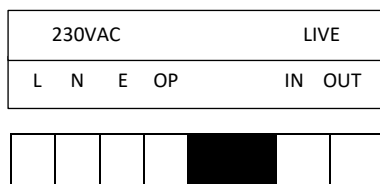
INSTALLATION

Securely mount the unit to the wall or cabinet using the 4 casing mountings. Depending on the installation, connect the supplied rubber antenna or the dipole antenna to the BNC connection.

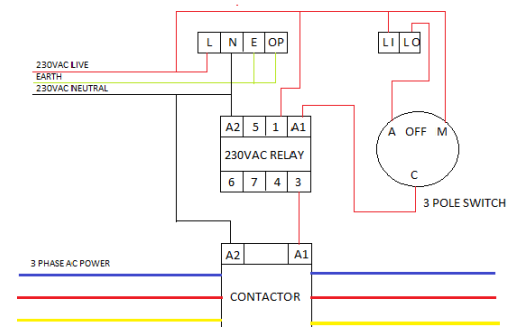
Connection of PCU'S

PCU's use a full RX ID when learned as zone outputs.

Using a small number 0 common screwdriver, insert the wiring as needed, into the supplied connectors.



When the pressure switch option is not in use, the over pressure pin must be connected to earth.



Operation of PCU'S

Press and hold the L button until red status light illuminates.

Option 1

Press learn on the handheld programmer (After setting up correct TX and RX id)

Green status light will flash twice if PCU is learned.

Option 2

Press and hold appropriate ID group(A=1,B=2,C=3,P=P) button on ICI 12 until red light flash on ICI12.

Green status light will flash twice if PCU is learned.

Option 3

Press and hold appropriate pump number button on TLC until red light flash on TLC.

Green status light will flash twice if PCU is learned.

Status lights at pump button: Green – Automatic on, Red+Green – Manual on, Red – Manual off.